

# WHITE BARN COUNTRY CLUB PRUD SUBDIVISION NO. 2 PHASE I

TAXING UNIT : II

PREFIX : 17-150

## LOTS 1-12

IN PLEASANT VIEW CITY

SCALE 1" = 50'

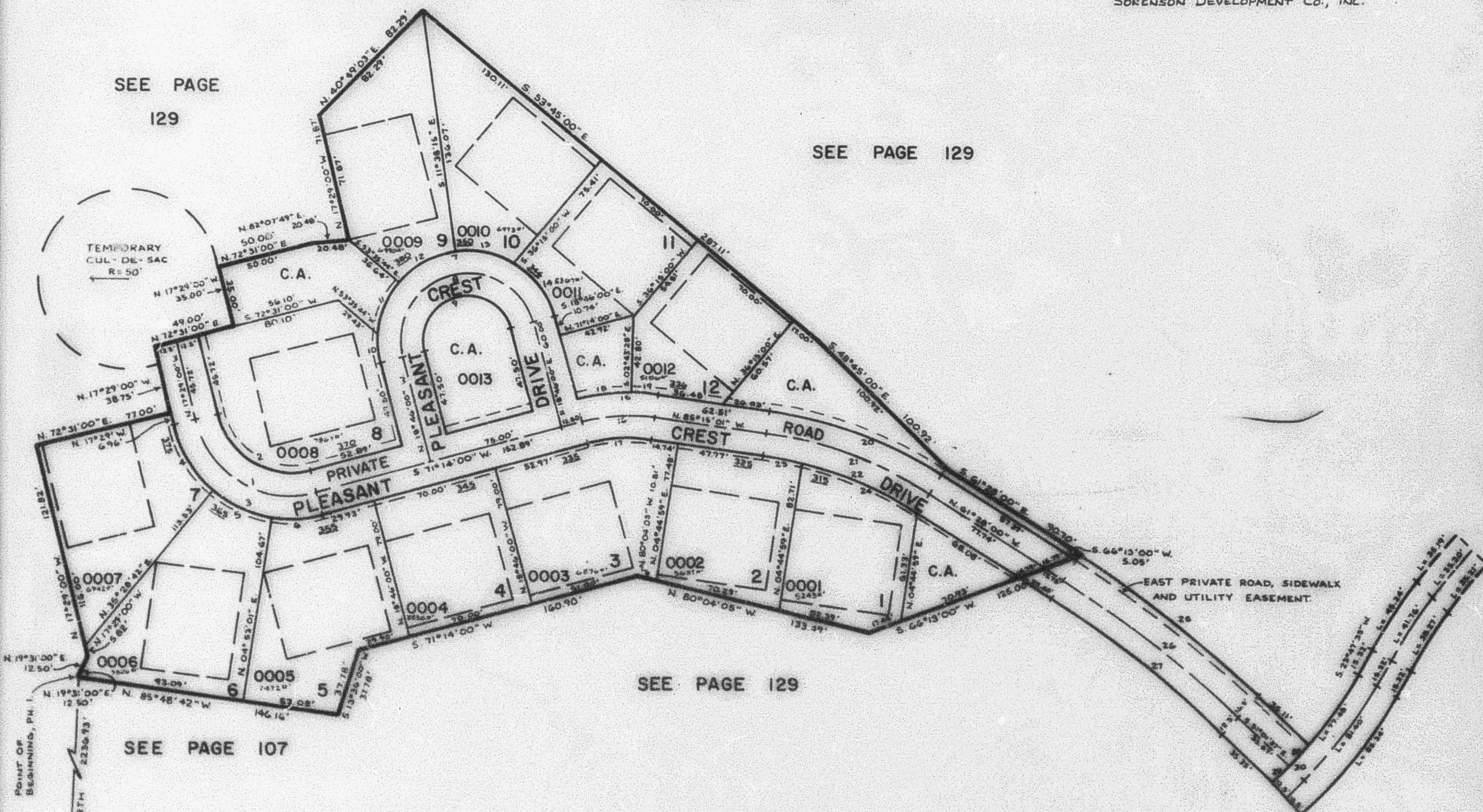
EXCEPT WHERE OTHERWISE SHOWN ALL  
LOTS AND COMMON AREA OWNED BY:  
SORENSEN DEVELOPMENT CO., INC.

SEE PAGE  
129

SEE PAGE 129

SEE PAGE 129

SEE PAGE 107



### CURVE DATA

1	2	3	4	5	6	7	8	9	10
Δ: 91°17'00"	91°17'00"	91°17'00"	37°02'18"	30°35'41"	23°39'01"	180°00'00"	180°00'00"	180°00'00"	18°18'05"
R: 55.00'	42.50'	67.50'	67.50'	67.50'	67.60'	50.00'	37.50'	25.00'	50.00'
L: 87.63'	67.71'	107.84'	83.64'	36.04'	27.86'	157.06'	117.81'	75.84'	15.97'
LC: 78.95'	60.77'	94.52'	42.88'	35.62'	27.67'	100.00'	79.00'	50.00'	15.90'
T: N 63°07'30" W	N 63°07'30" W	N 63°07'30" W	N 75°00'09" W	N 69°47'08" W	N 83°03'30" W	N 71°14'00" E	N 71°14'00" E	N 71°14'00" E	N 59°36'28" W
56.25'	43.46'	64.03'	22.11'	18.46'	14.13'				8.05'
11	12	13	14	15	16	17	18	19	20
Δ: 36°52'12"	41°57'29"	38°46'08"	44°06'07"	23°30'59"	23°30'59"	23°30'59"	16°02'32"	07°28'27"	23°47'01"
R: 80.00'	50.00'	50.00'	50.00'	112.50'	100.00'	87.50'	112.50'	112.50'	247.50'
L: 32.18'	36.62'	35.83'	36.49'	46.11'	41.04'	35.91'	31.50'	14.68'	102.74'
CC: 31.52'	35.80'	37.79'	37.54'	45.85'	40.70'	35.96'	31.40'	14.67'	102.00'
T: N 17°58'10" E	N 57°23'01" E	S 82°15'11" E	S 40°49'03" E	N 82°59'29" E	N 82°59'29" E	N 82°59'29" E	N 79°15'16" E	S 88°59'14" E	S 73°21'31" E
16.81'	19.17'	17.59'	20.25'	23.42'	20.82'	18.21'	15.85'	7.55'	52.12'
21	22	23	24	25	26	27	28	29	30
Δ: 83°47'01"	23°47'01"	09°44'05"	18°02'55"	10°25'23"	10°25'23"	10°25'23"	03°31'36"	08°55'24"	06°47'00"
R: 298.00'	228.50'	228.50'	222.30'	242.64'	676.19'	663.99'	248.11'	248.11'	248.11'
L: 91.65'	92.39'	22.27'	70.09'	186.20'	123.20'	120.72'	16.51'	12.51'	24.02'
LC: 76.86'	91.10'	22.26'	64.80'	136.03'	123.03'	120.72'	16.51'	12.51'	24.02'
T: S 72°01'31" E	S 73°02'31" E	S 87°23'00" E	S 70°27'29" E	S 56°14'49" E	S 56°14'49" E	S 56°14'49" E	S 37°02'35" W	S 40°26'05" W	S 38°30'17" W
44.44'	46.88'	11.04'	28.34'	63.85'	62.71'	60.63'	6.26'	6.26'	14.53'

NOTE: FOR COMPLETE END DATA SEE ORIG. DED. PLAN IN BOOK 27, PAGES 5 TO 8.  
FOR EASEMENTS SEE ORIG. DED. PLAN IN BOOK 27, PAGES 3 TO 5.